

Product Data Sheet

GPSB4






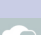
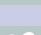
C/Note	Doc Issue	Date	Approval
01019	2	31.02.12	J.J.

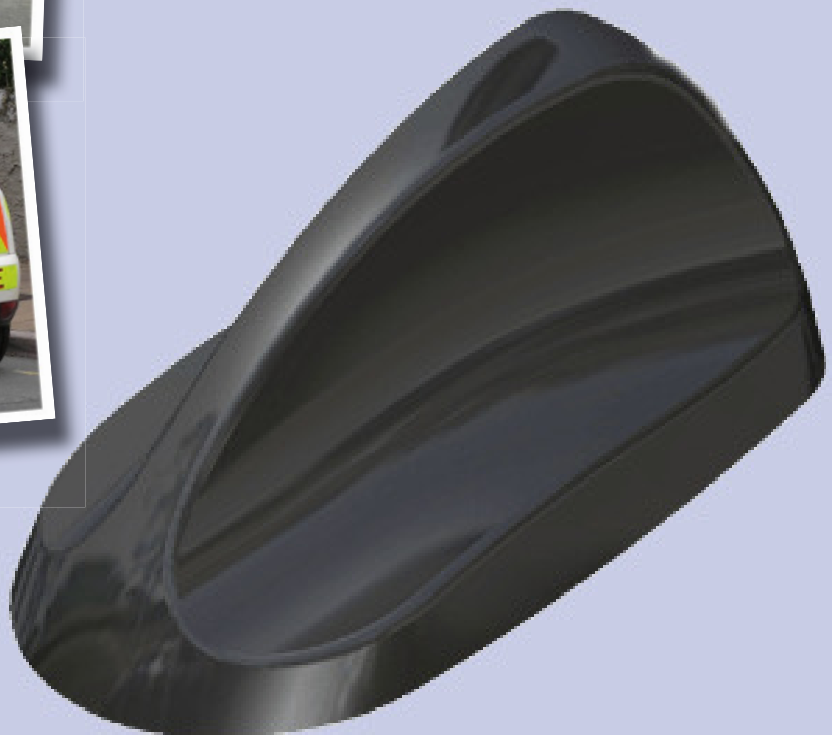
Heavy Duty Multifunction Antenna

OEM shark fin style

GPS, and dual WIFI/WiMAX in one antenna

Heavy duty design for optional VHF or UHF whip

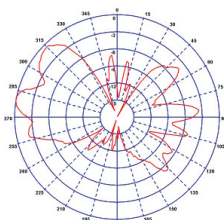
-  P25
-  GPS
-  Omni Directional
-  ROHS Compliant
-  Vehicle Mount
-  WIFI
-  WiMax



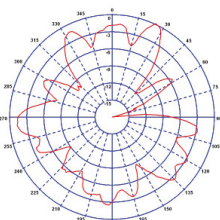
Heavy Duty Multifunction Antenna

INTERNAL 2.2-2.7GHz & 4.9GHz ANTENNA

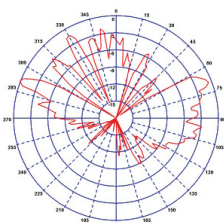
E-Plane (2400MHz)



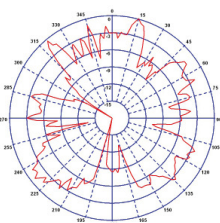
H-Plane (2400MHz)



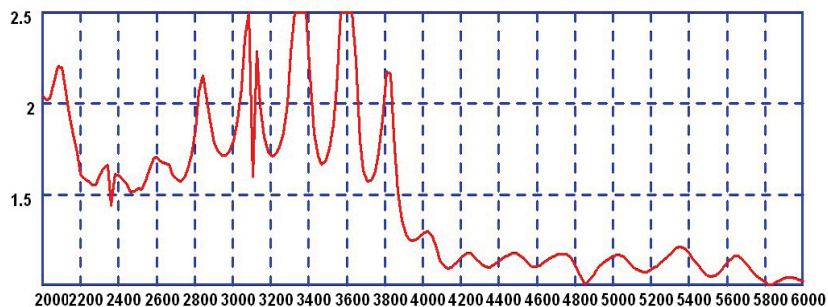
E-Plane (5400MHz)



H-Plane (5400MHz)



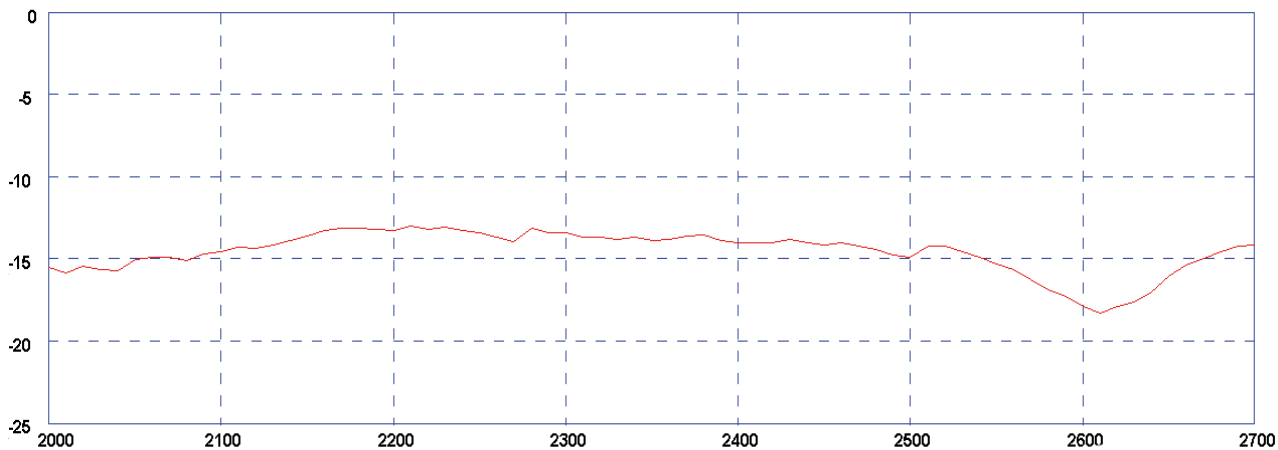
Typical VSWR*



* VSWR measured in free space with 1m cable

INTERNAL 2.2-2.7GHz Antenna Isolation

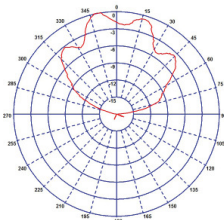
Port to Port Isolation - Internal Elements 2.4GHz*



*Port to port isolation measured without extension cables

GPS ANTENNA

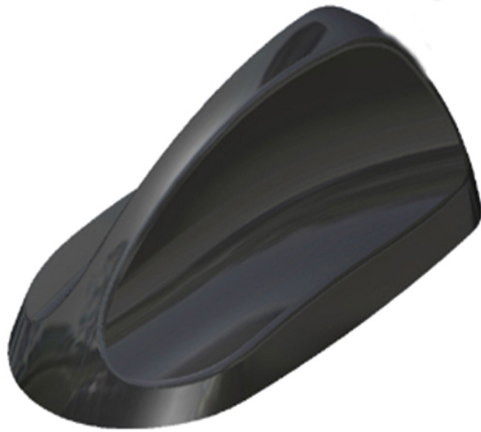
GPS



P25

Heavy Duty Multifunction Antenna

- Public Safety
- GPS
- Omni Directional
- ROHS Compliant
- Vehicle Mount
- WiFi
- WiMax



GPSB4

OEM shark fin style

GPS and dual WLAN/WiMax in one antenna

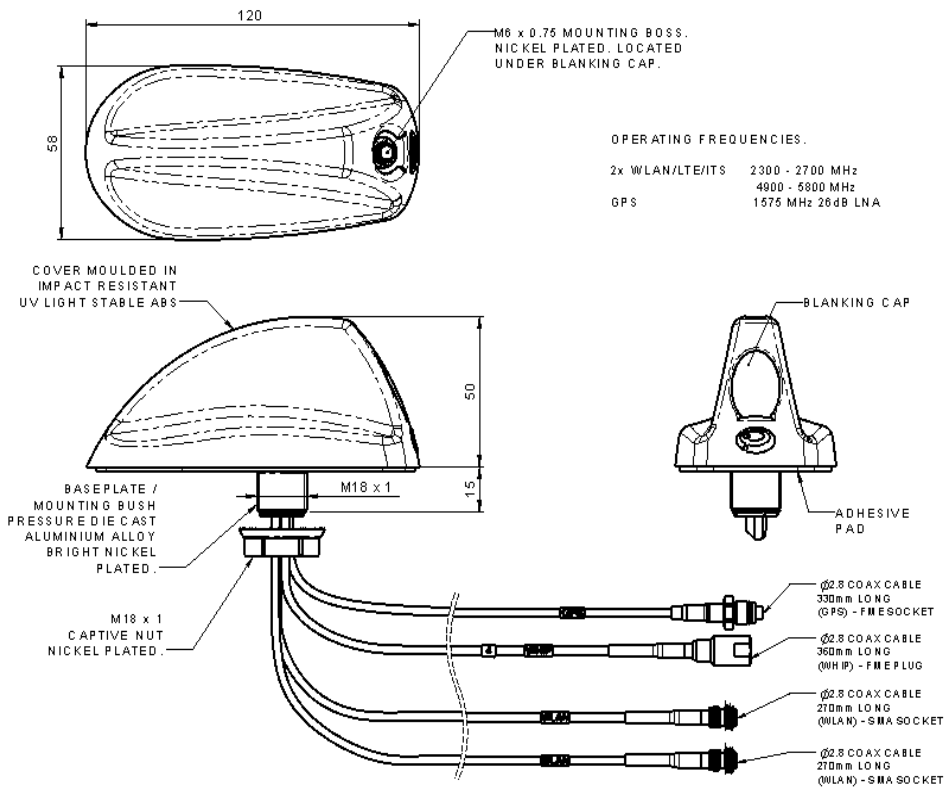
Heavy duty design for optional VHF or UHF whip

The GPSB series antenna provides for multiple RF technologies within one antenna housing. Requiring only a single hole fixing, the GPSB reduces vehicle damage, cost of installation and visual impact.

The OEM shark fin style design provides multiple antenna functions while remaining discrete.

The GPSB is suitable for public safety (overt and discrete) and transportation applications, where a cost effective and efficient antenna is essential to the system.

Technical Drawing



Heavy Duty Multifunction Antenna

Part No.		GPSB4
Electrical Data		
Frequency Range (MHz)	Element 1	1575
	Element 2	2200-2700 & 4900-6000
	Element 3	2200-2700 & 4900-6000
	Element 4	dependent on selected whip
Operational Bands	Element 1	GPS
	Element 2	2.4GHz WLAN, WiMAX / Public Safety 4.9GHz / 5.8GHz WIFI
	Element 3	2.4GHz WLAN, WiMAX / Public Safety 4.9GHz / 5.8GHz WIFI
	Element 4	dependent on selected whip
Gain: Isotropic	2dBi (on all bands)	
Compared to ¼ wave	0dB (on all bands)	
Polarisation	Vertical	
Pattern	Omni-directional	
Impedance	50Ω	
Max Input Power (W)	25 internal elements / main whip dependant on radiator	
GPS Data		
Frequency Range (MHz)	1575	
VSWR	<1.5:1 ± 4MHz	
Gain: LNA	26dB	
Polarisation	Right Hand Circular	
Operating Voltage	3-7V DC (fed via coax)	
Current	Typical 14mA	
Mechanical Data		
Dimensions (inches)	Total Height	2 (50mm)
	Length	4.72 (120mm)
	Width	2.3 (58mm)
Operating Temp (°C)	-40° / +176° F (-40° / +80°C)	
Material	Impact resistant UV light stabilised ABS	
Colour	Black	
Ingress Protection	Equivalent to IP67 when correctly installed	
Cable Data		
Cable Type	Whip	RG174
	GPS	RG174
	WLAN 1	RG174
	WLAN 2	RG174
Diameter (inches)	Whip	0.11 (2.8mm)
	GPS	0.11 (2.8mm)
	WLAN 1	0.11 (2.8mm)
	WLAN 2	0.11 (2.8mm)
Length (inches)	Whip	14 (360mm)
	GPS	13 (330mm)
	WLAN 1	12 (270mm)
	WLAN 2	12 (270mm)
Termination	Whip	FME plug
	GPS	FME socket
	WLAN 1	SMA socket
	WLAN 2	SMA socket

Panorama Antennas Ltd
Frogmore, London, SW18 1HF, United Kingdom

T: +44 (0)20 8877 4444
F: +44 (0)20 8877 4477

E: sales@panorama-antennas.com
www.panorama-antennas.com

Waiver: The data given above is indicative of the performance of the product/s under particular conditions and does not imply a guarantee of performance. These specifications are subject to change without notice.

Copyright © Panorama Antennas Ltd. All rights reserved.

PANORAMA  ANTENNAS